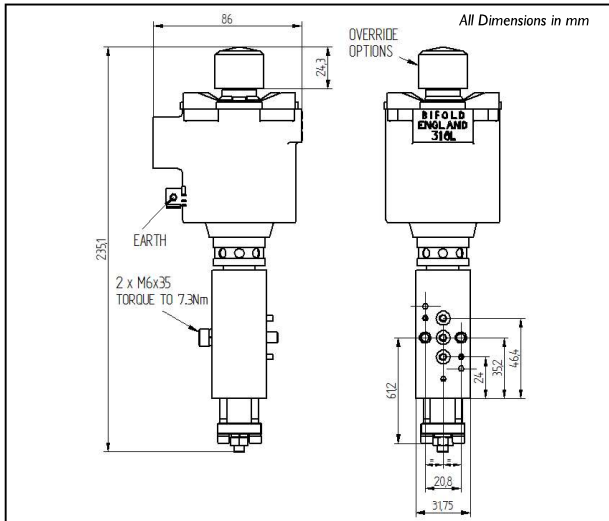
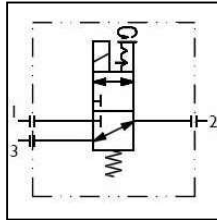


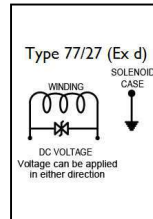
## Dimensional Drawing



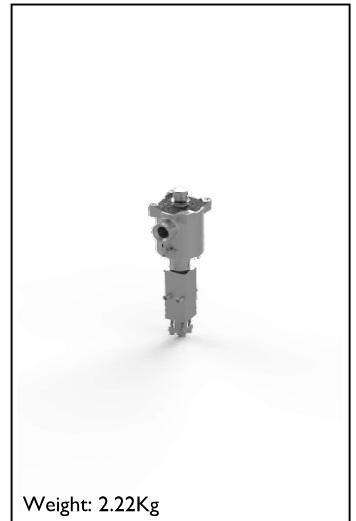
## Schematic



## Wiring



## Rendering



## Certification



## FP05/S0A/M/32/NC/S/77A-24D/MOR/65

<b>FP05</b>	5 litre per minute	<b>Model Code</b>
<b>S0A</b>	Direct Acting, Spring Return, 250bar	<b>Max Valve Pressure</b>
<b>M</b>	Subbase mounting	<b>Connections</b>
<b>32</b>	3 way, 2 position	<b>Valve Configuration</b>
<b>NC</b>	Normally Closed	<b>Valve Configuration</b>
<b>S</b>	Nitrile -30°C to +130°C	<b>O-ring Material</b>
<b>77</b>	Ex d	<b>Solenoid</b>
<b>A</b>	ATEX/IECEx Dual Certified	<b>Solenoid Approval</b>
<b>24D</b>	24VDC	<b>Voltage/Resistance</b>
<b>MOR</b>	Electrical to switch or stayput manual override	<b>Override Options</b>
<b>65</b>	6.5 Watts	<b>Power</b>
	M20 x 1.5 Cable Entry	<b>Cable Entry</b>
	Standard	<b>Option</b>
	No Manifold	<b>Manifold Option</b>
<b>FP05 /S0A /M /32 /NC /S /77 A -24D /MOR /65</b>		<b>Model Number</b>

## Solenoid T-Rating

Ex d IIC Gb	T4 T135°C (-60°C ≤ Tamb ≤ +90°C)
Ex tb IIIC Db	T5 T100°C (-60°C ≤ Tamb ≤ +55°C)
	T6 T85°C (-60°C ≤ Tamb ≤ +40°C)

This is a bespoke datasheet. For further details on the complete range, please refer to catalogue:  
Direct Acting Solenoid Valves Model FP01 Ex d, Ex emb, Ex ia

## Accuracy of Information

We take care to ensure that product information in this catalogue is reasonably accurate and up-to-date. However, our products are continually developed and updated so to ensure accurate and up-to-date information please refer to the product catalogue issue list on our web site or contact a member of our sales team.

When selecting a product, the applicable upstream system design must be considered to ensure safe use. The products function, material compatibility, adequate ratings, correct installation, operation and maintenance are the responsibilities of the system designer and user.

## Quality Assurance

All Bifold products are manufactured to a most stringent QA programme to ensure that every product will give optimum performance and reliability. We are third party certified to BS EN ISO 9001:2008. Functional test certificates, letter of conformity and copies of original mill certificates, providing total traceability are available on request, to BS EN 10204 1.1 where available. We reserve the right to make changes to the specifications and design etc., without prior notice.