

DATA SHEET PRO-LOCK STANDARD

PRO-LOCK VALVE LOCKOUT DEVICE

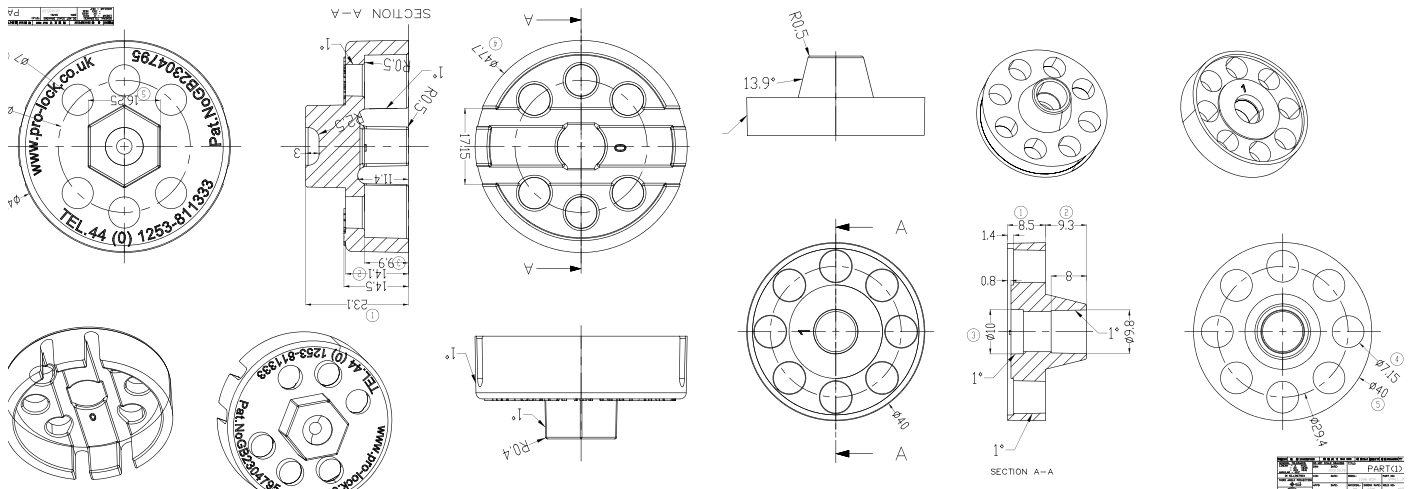
SKU CODE	PRODUCT
PR-01XS#WC	Pro-Lock®
PR-01XS#S	Pro-Lock® including Wire
PROCOMPXS#C	Complete System (Pro-Lock®, Wire & Tool)
Wire-1.5M#	1.5M Looped Wire
PR-01TL#	Operating Tool

PR-01XS#WC

Pro-Lock® is moulded from MFI-1310, an impact copolymer polypropylene. UV stabilised with resistance to oils and greases, plus excellent impact resistance, the applications for this material include automotive articles such as car bumpers, battery cases etc.

Independent operational and drop tests carried out between -55°C and +55°C. No significant deterioration in strength or problems with operation noted.

All Pro-Locks come with a 12 month warranty



Internals: M8 x 30mm 304/S15 Stainless Steel bolt, M8 nut, fabricated from 303 Stainless Steel.

Available in 4 colours with no MOQ

Red, Yellow, Green and Blue.
White available on request



PROPERTY	UNIT	TEST METHOD	VALUE
Tensile strength at yield	MPa	ISO 527-2	26
Flexural Modulus	MPa	ISO 178	1400
Tensile Modulus	MPa	ISO 527-2	1500
Elongation at yield	%	ISO 527-2	10
Izod impact notched at 23°C	KJ/m2	ISO 80	9
Izod impact notched at -20°C	KJ/m2	ISO 80	5.5
Charpy impact strength notched at 23°C	KJ/m2	ISO 179	10
Charpy impact strength notched at -20°C	KJ/m2	ISO 179	5
Hardness Rockwell - R-scale	KJ/m2	ISO 2039-2	85
Melting Point	°C	ISO 3146	165
Vicat softening temperature 10N-50°C per hr	°C	ISO 306	145
Density	g/cm2	ISO 1183	.905
Bulk density	g/cm2	ISO 1183	.525