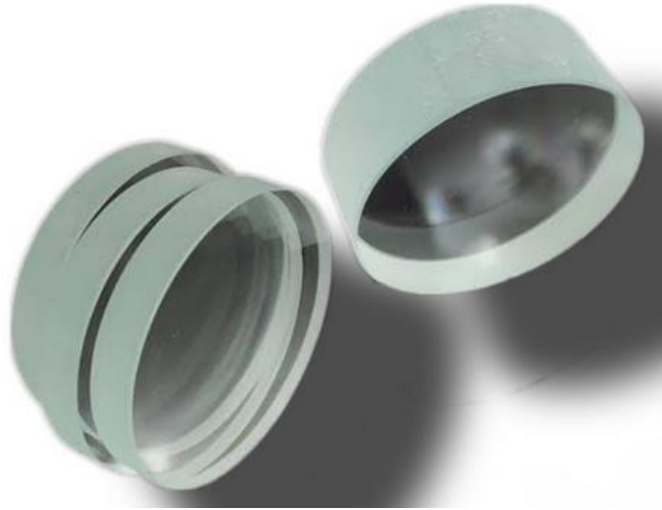


SIGHT GLASS, TAPER, 120X110X15MM



General Information:

- **Type:** Sight Glass
- **Shape:** Tapered
- **Dimensions:**
 - **Outer Diameter:** 120 mm
 - **Inner Diameter:** 110 mm
 - **Thickness:** 15 mm

Material Options:

- **Borosilicate Glass** (High thermal and chemical resistance)

- **Tempered Glass** (Enhanced durability and impact resistance)
- **Quartz Glass** (Suitable for extreme high-temperature applications)

Applications:

- Boilers and pressure tanks
- Oil & gas industry
- Liquid level monitoring systems
- Chemical processing equipment
- Industrial machinery with fluid observation needs