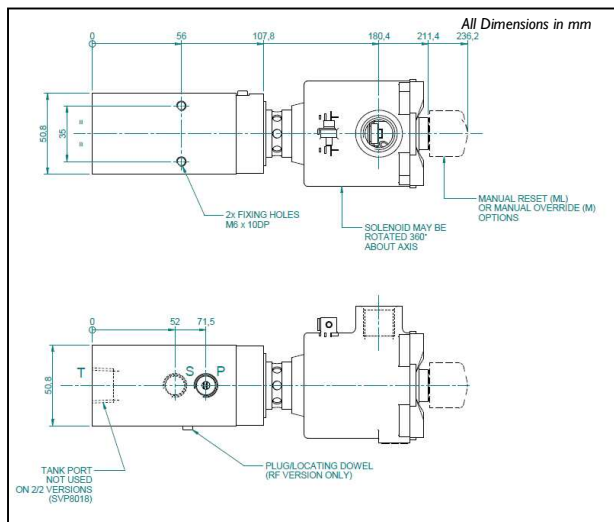
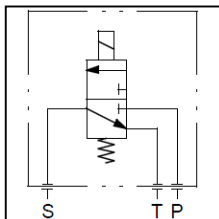


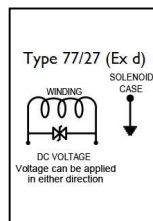
## Dimensional Drawing



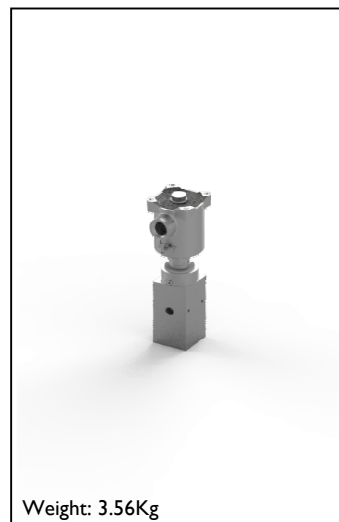
## Schematic



## Wiring



## Rendering



## Certification



## SVP8108/NC/04/S/77A-24D/65

SVP	Direct Acting Solenoid Valve	Model Code
81	Body ported 1/4" NPT	Connections
0	3-way, 2-position	Configuration
8	8 lpm @ 10 bar dp	Flow Rating
	Forward Flow 'P' to 'S' only	Flow Direction
NC	Normally Closed	Configuration
04	250 bar	Working Pressure
S	Nitrile -30°C to +130°C	O-ring material
77	Ex d	Solenoid
A	ATEX/IECEx Dual Certified/Labelled	Solenoid Approval
24D	24VDC	Voltage
	Auto Reset	Options
65	6.5 Watts	Power
	M20 x 1.5 Cable Entry	Cable Entry
	Standard	Option
	NPT Ports	Thread Form
SVP 81 0 8 /NC /04 /S /77 A -24D /65		Model Number

## Solenoid T-Rating

Ex d IIC Gb	T4 T135°C (-60°C ≤ Tamb ≤ +90°C)
Ex tb IIIC Db	T5 T100°C (-60°C ≤ Tamb ≤ +55°C)
	T6 T85°C (-60°C ≤ Tamb ≤ +40°C)

This is a bespoke datasheet. For further details on the complete range, please refer to catalogue:  
SVP8x08 Series Ex d