

Product Specifications

Part Number: CSG-4222-S60180

Description: C5 Series Directional Control Valve

Title: Valve, 4-Way, Alum, 6VDC

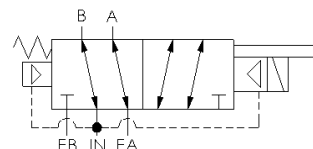
Actuator(s): Solenoid-Pilot \ Spring Return

Function: 4-way, 2-position

Body:	Body Ported, 1/8" NPT
Pressure Range:	15-115 psi 1.03-7.93 bar
Flow:	0.75 Cv
Media:	Air - Inert Gas Natural Gas
Temperature Rating	14°F to 122°F -10°C to 50°C

Maintenance & Documentation

Repair kit:	C-4222-SP
Replacement operator:	EN-3198-12-H1-D006
Drawing:	GC5-0003 GEO GHC-0003 Options_HC_conn GMO-0004 Options_manual_ovrd GSL-0002 Options_sol_exh
Operation & Installation:	
Catalog:	C Series Catalog



Materials of Construction

Body:	Aluminum
Seals, Valve Proper:	FKM
Weight:	0.56 lb 0.26 kg



Solenoid Specifications

Description:	General Purpose - EN Class
Operating voltage:	
Power (nominal):	
Solenoid Ingress Protection:	
Electrical Protection:	Not applicable
Coil class:	F
Duty cycle:	Continuous Duty
Protection:	
Certification:	

Operator Construction

Solenoid housing material:	Engineered Polymer
Solenoid seal material:	FKM
Coil:	Epoxy Molded
Solenoid Connection:	Molded 3 spade coil, micro-mini (Form C)